

Clarion®

Owner's manual
Mode d'emploi
Manual de instrucciones
CHINESE

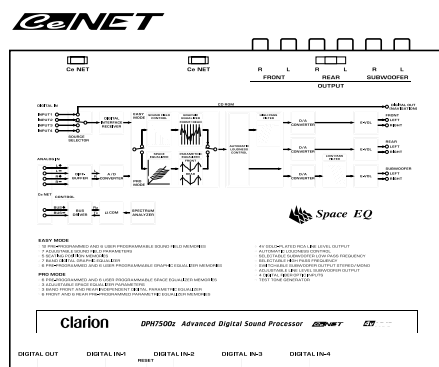
DPH7500z

DIGITAL GRAPHIC & PARAMETRIC
EQUALIZER / DSP / CROSSOVER
PROCESSOR MODULE

EGALISEURS GRAPHIQUE ET
PARAMÉTRIQUE NUMÉRIQUES / DSP
/ DIVISEUR DE FRÉQUENCES

ECUALIZADOR GRÁFICO Y
PARAMÉTRICO/PROCESADOR DE
SONIDO DIGITAL/MÓDULO
PROCESADOR DE RED DIVISORA

CHINESE / CHINESE / CHINESE
CHINESE / CHINESE / CHINESE



Thank you for purchasing the **Clarion DPH7500z**.

- * Please read this owner's manual in its entirety before operating this equipment.
- * Check the contents of the enclosed warranty card and keep it carefully with this manual.
- * The operating instructions are not provided with this manual. For the operating instructions, refer to the owner's manual of the source unit.

Contents

1. PRECAUTIONS	2
2. IDENTIFICATION OF PARTS	3
3. FEATURES	4
4. FUNCTIONS OF DPH7500z	5
Functions common to each mode	5
Easy-mode functions	6
Professional-mode functions	8
5. INSTALLATION	10
6. CONNECTIONS	11
7. SYSTEM EXAMPLES	13
8. SPECIFICATIONS	14

1. PRECAUTIONS

1. This unit does not operate independently. The unit must be used with a source unit that has a cable connection for CeNET wire bound (sold separately).
2. The DPH7500z can easily be damaged by moisture, high temperatures or high humidity. Keep the inside of the car clean and well ventilated.
3. Never subject the DPH7500z to strong shocks or open its case. Doing so may result in damage.
4. Use a soft, dry cloth to wipe dirt off the DPH7500z. Never use a hard cloth or thinners, alcohol, etc. For tough dirt, apply some cold or lukewarm water to a soft cloth and wipe off the dirt gently.
5. When the source unit is switched to the traffic announcement or PTY interrupt reception while using the DPH7500z, the effect from DPH7500z doesn't work.

This equipment has been tested and found to comply with the limits for a Class B digital device, pursuant to Part 15 of the FCC Rules.

These limits are designed to provide reasonable protection against harmful interference in a residential installation. This equipment generates, uses, and can radiate radio frequency energy and, if not installed and used in accordance with the instructions, may cause harmful interference to radio communications. However, there is no guarantee that interference will not occur in a particular installation. If this equipment does cause harmful interference to radio or television reception, which can be determined by turning the equipment off and on, the user is encouraged to consult the dealer or an experienced radio/TV technician for help.

CAUTION

CHANGES OR MODIFICATIONS NOT EXPRESSLY APPROVED BY THE MANUFACTURER FOR COMPLIANCE COULD VOID THE USER'S AUTHORITY TO OPERATE THE EQUIPMENT.

INFORMATION FOR USERS:

CHANGES OR MODIFICATIONS TO THIS PRODUCT NOT APPROVED BY THE MANUFACTURER WILL VOID THE WARRANTY AND WILL VIOLATE FCC APPROVAL.

Be sure to unfold and read the next page.

Veillez déplier et vous référer à la page suivante.
Cerciórese de desplegar y de leer la página siguiente.

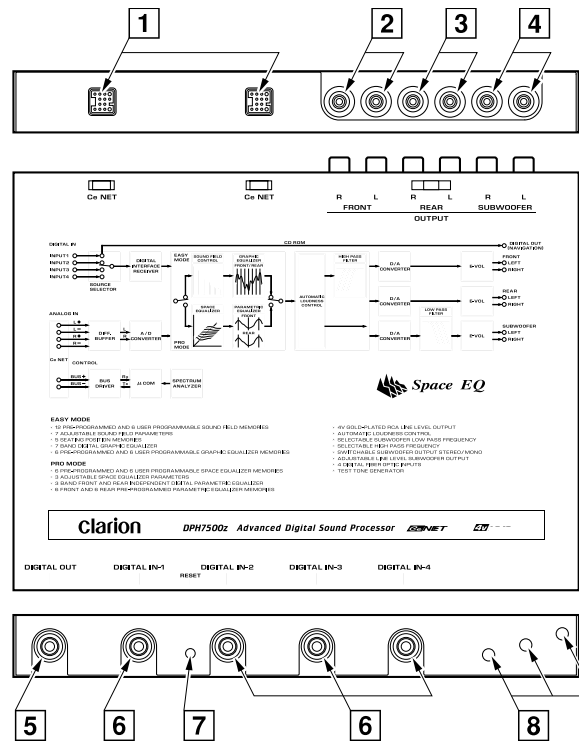
Clarion Co., Ltd.

All Rights Reserved. Copyright © 1998: Clarion Co., Ltd.
Printed in Japan / Imprimé au Japon / Impreso en Japón / CHINESE

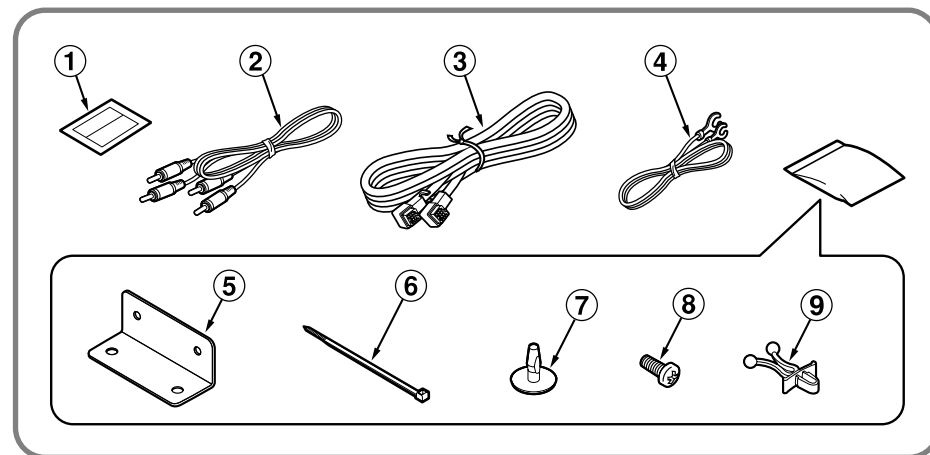
GP-970B
280-7263-00

2. IDENTIFICATION OF PARTS / PRINCIPALES PIÈCES IDENTIFICACIÓN DE PARTES / CHINESE

DPH7500z



Accessories / Accessoires / Accesorios / CHINESE



2. IDENTIFICATION OF PARTS

DPH7500z

- 1 CeNET input/output terminal
Connect the CeNET cable.
* Equipment to this terminal is not specified.
- 2 Front RCA terminals
Connect the RCA cable.
- 3 Rear RCA terminals
Connect the RCA cable.
- 4 Subwoofer RCA terminals
Connect the RCA cable.
- 5 Exclusive terminal for digital signal output
No used.
- 6 Digital signal input terminal
Connect the digital optical fiber cable.
* After connection, be sure to fix it with the cable clip.
- 7 Reset switch
When no sound is heard, press this switch.
Note:
Pressing the reset switch performs the system check.
- 8 Cable clip insertion holes
Insert the cable clip in this hole and fix the digital optical fiber cable.

Accessories

- 1 Name plate 1 sheet
- 2 RCA cable 2 pieces
- 3 CeNET cable 1 piece
- 4 Ground lead 1 piece
- 5 Mounting bracket 2 pieces
- 6 Cord clamp 3 pieces
- 7 Canoe clip 4 pieces
- 8 Mounting screw 4 pieces
- 9 Cable clip 3 pieces

3. FEATURES

- Switchable Subwoofer Output (Stereo/Mono) and Adjustable Line Level Subwoofer Output
 - Selectable Subwoofer Low Pass Frequency and High Pass Frequency
 - 4V/6ch Gold-Plated RCA Line Level Output, 4 Optical Digital Inputs and 1 Optical Digital Output
- < Easy mode >
- 12 Pre-Programed and 6 User Programmable Sound Field Memories
 - 7 Adjustable Sound Field Parameters
 - 5 Seating Position Memories
 - 7 Band Digital Graphic Equalizer
 - 6 Pre-Programed and 6 User Programmable Grapic Equalizer Memories
- < Pro mode >
- 6 Pre-Programed and 6 User Programmable Space Equalizer Memories
 - 3 Adjustable Space Equalizer Parameters
 - 3 Band Front and Rear Independent Digital Parametric Equalizer
 - 6 Front and 6 Rear Pre-Programed Parametric Equalizer Memories

7. CHINESE